

# TechBridge's Network Monitoring

## Benefits

- Monitor and optimize your data center across physical, virtual, and cloud environments.
- All-in-one solution for the monitoring & management
- Be proactive and avoid downtime
- Real-time performance monitoring
- Save time and resources
- Predictive Analysis & Capacity Planning
- Overall Operational cost optimization

## Standard Features

- Get a correlation view of the data center to track performance metrics, resource utilization configuration changes, and hardware status.
- Smart alerts and dynamic baseline thresholds reduce alert noise and identify bottlenecks
- Out-of-the-box reports help with capacity planning and infrastructure sizing
- Integrated ITSM and workflow management tools IT operations
- Use a combination of agent-based and agentless monitoring approaches to meet your custom needs

Network Monitoring is an end-to-end IT performance management and monitoring suite for today's heterogeneous, hybrid, and scale-out infrastructures. Dedicated monitoring tools provide deep insight into each layer. A general practitioner of IT infrastructure; it provides an integrated console that allows administrators to identify and resolve most IT problems.

From a single console, IT managers can monitor all aspects of their on-premises and cloud environments, including servers, applications, virtualization, storage, and containers.

## Overview

Network monitoring enables you to centrally manage all devices in your data centers. It allows you to connect to, collect data from, and configure your devices via SNMP, HTTPs and other protocols for IP-based networks.

- Automatically collect real-time data from all your devices – down to the individual outlet level – through a single interface
- Set power and environmental thresholds on collected data and receive alerts so you'll be the first to know about potential issues before they become bigger problems
- Configure polling frequencies to your intervals that provide meaningful data while maintaining efficient network traffic
- Forward and filter traps to receive only the notifications that matter to you
- Analyze and trend collected data to uncover insights around your data center operations, including capacity forecasting

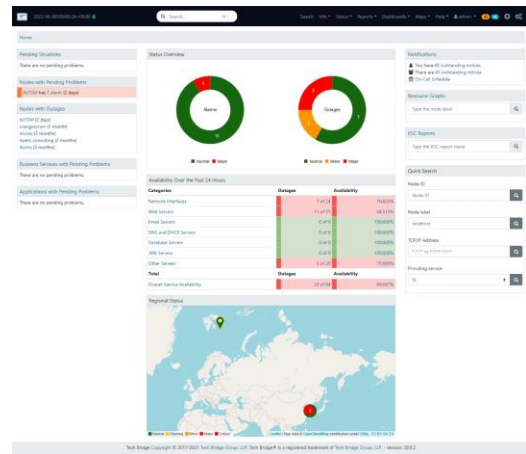
## Key Highlights

- End-to-end visibility:** Measures, monitors, manages, and controls data center resources from both plant infrastructure components and IT infrastructure devices (servers, switches, and so on).
- More informed decisions:** Gain complete visibility across your data center infrastructure and enable IT managers to make more informed decisions based on operational improvement tools.
- Scaling as needed:** The solution will be available and scalable in the future. Data centers are getting bigger and bigger, and monitoring requirements are increasing accordingly.
- Data Correlation:** Failure to recognize the interactions or interdependencies of different factors can lead to unplanned outages. Prevent this with TechBridge's correlation engine.
- Process automation:** Significantly reduces complexity and human error. Make better use of your workforce with automated solutions for data center monitoring and management.
- Business Service Monitoring:** Find and fix the root cause of the problem before it affects your end users.

## Component Overview

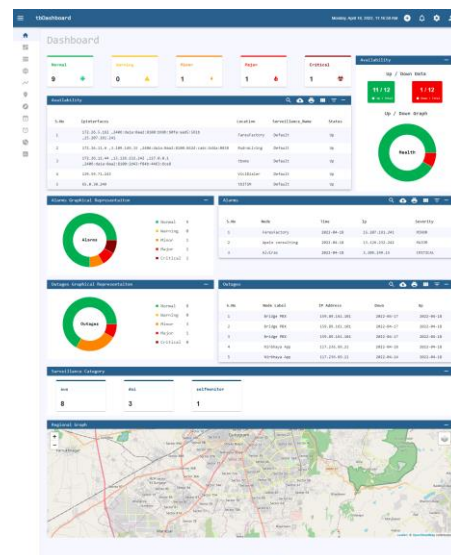
### 1. tbXMS (NMS/EMS)

It is an enterprise grade network monitoring & management platform for all IT Asset (Like Network Element, Applications, VM ware, OS, Database, Server & others devices). It covers all aspects of the FCAPS network management model.



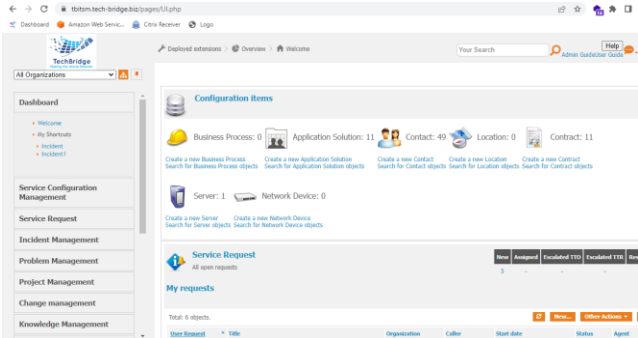
### 2. tbDashboard

tbDashboard is give you the bird’s eye view on entire infrastructure. There are various views are available. This dashboard can be customized as per the requirement.



### 3. tbITSM: IT Service Management/ Help-Desk/ Ticketing Tool

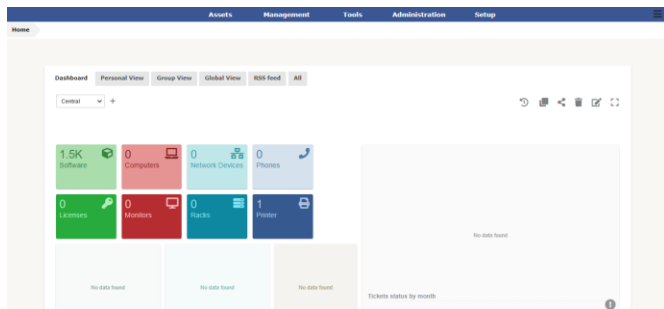
tbITSM meets the specified standards of ITILv3, the most widely used best practice framework for service management software. It offers a number of advanced features for inventory, inventory and help desk management.



### 4. tbAssetManager

It keeps track of all the physical, logical and other network assets, as well as the assignment of those assets to customers.

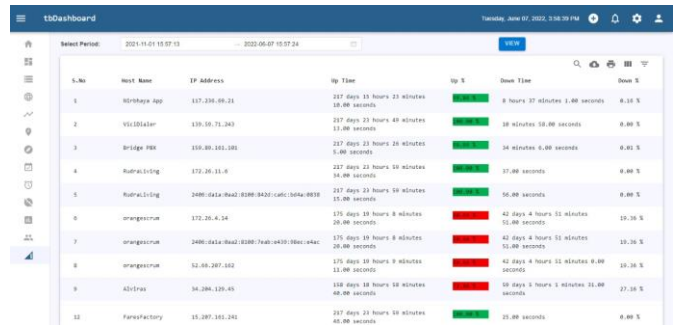
- As communications networks evolve into more complex service platforms with layered technologies and multi-vendor systems
- It is imperative to have a simple, flexible, and consistent way to manage and to maintain how networks are configured



### 5. tbSLAManager

Defines a set of one or more service that specify the Service obligations stipulated in an SLA contract for a particular time period (weekly, monthly, and so on). SLA violation alarms

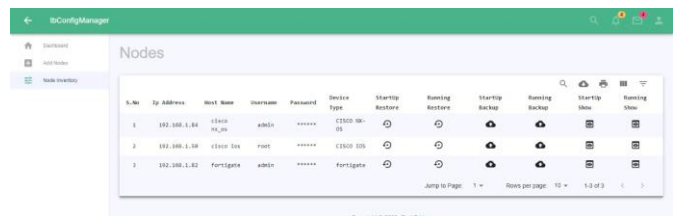
shall be generated to notify whenever an agreement is violated or is in danger of being violated. The reports supported shall include one that monitors service availability (including Mean Time to Repair (MTTR), Mean Time between Failure (MTBF), and Maximum Outage Time thresholds) and the other that monitors service transaction response time.



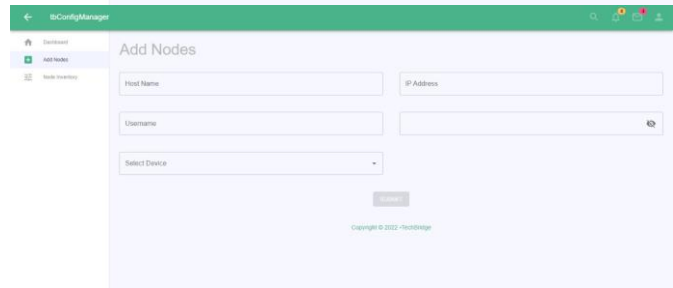
S.No	Host Name	IP Address	Up Time	Up %	Down Time	Down %
1	SRMApp	137.230.66.21	237 days 13 hours 23 minutes 18.00 seconds	100%	8 hours 37 minutes 1.00 seconds	3.18 %
2	YS10043AP	139.19.73.243	237 days 23 hours 43 minutes 11.00 seconds	100%	38 minutes 58.00 seconds	8.00 %
3	SR-Edge-PK8	193.181.101.100	237 days 23 hours 24 minutes 5.00 seconds	100%	34 minutes 6.00 seconds	8.83 %
4	SRMApp-1-10g	172.20.13.6	237 days 23 hours 10 minutes 44.00 seconds	100%	37.00 seconds	8.00 %
5	SRMApp-1-10g	1400-data-00ad-0300-3a30-calc1-b0ba-0830	237 days 23 hours 10 minutes 15.00 seconds	100%	56.00 seconds	8.00 %
6	SRMApp-1-10g	172.20.4.14	170 days 18 hours 8 minutes 20.00 seconds	100%	42 days 4 hours 11 minutes 51.00 seconds	19.38 %
7	SRMApp-1-10g	1400-data-00ad-0300-7a4b-4830-080a-104a	170 days 18 hours 8 minutes 20.00 seconds	100%	42 days 4 hours 11 minutes 51.00 seconds	19.38 %
8	SRMApp-1-10g	172.20.297.102	170 days 18 hours 8 minutes 11.00 seconds	100%	42 days 4 hours 11 minutes 8.00 seconds	19.38 %
9	AS1-10g	14.204.120.45	139 days 18 hours 18 minutes 48.00 seconds	100%	59 days 9 hours 3 minutes 11.00 seconds	27.28 %
10	SRMApp-1-10g	15.207.101.245	237 days 23 hours 10 minutes 48.00 seconds	100%	23.00 seconds	8.00 %

### 6. tbConfigManager (Configuration Management)

Help to organizes and maintains critical Network Configurations of each and every component of the IT network infrastructure. The IT Teams can repair, modify, configure or upgrade devices remotely.



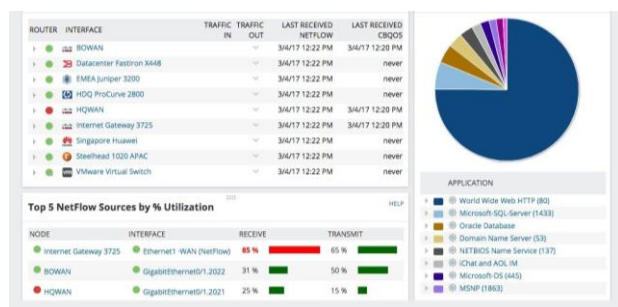
S.No	IP Address	Host Name	Username	Password	Device Type	StartUp	Running	StartUp Backup	Running Backup	StartUp Show	Running Show
1	192.168.1.84	cisco_H305	admin	*****	CISCO N305	⊕	⊕	⊕	⊕	⊕	⊕
2	192.168.1.10	cisco_S10	root	*****	CISCO 105	⊕	⊕	⊕	⊕	⊕	⊕
3	192.168.1.82	fortigate	admin	*****	Fortigate	⊕	⊕	⊕	⊕	⊕	⊕



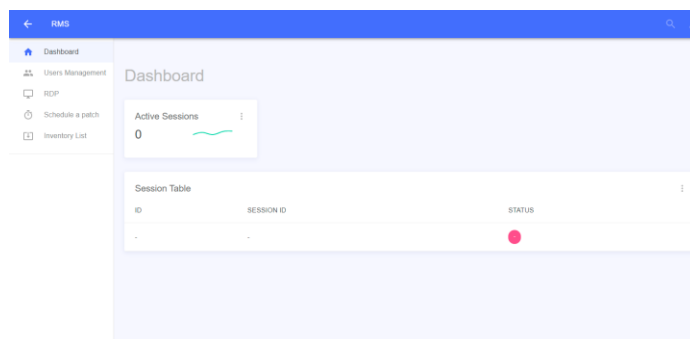
The screenshot shows the 'Add Nodes' form in the tbConfigManager interface. It includes input fields for 'Host Name', 'IP Address', 'Username', and 'Password'. There is also a 'Select Device' dropdown menu and a 'Save' button at the bottom.

**6. tbTA (Traffic Analyzer)**

tbTA record and analyze the traffic on your network. It can break down the traffic by application, user, or IP address. The tool will let you visualize the data flows through diagrams or tables.

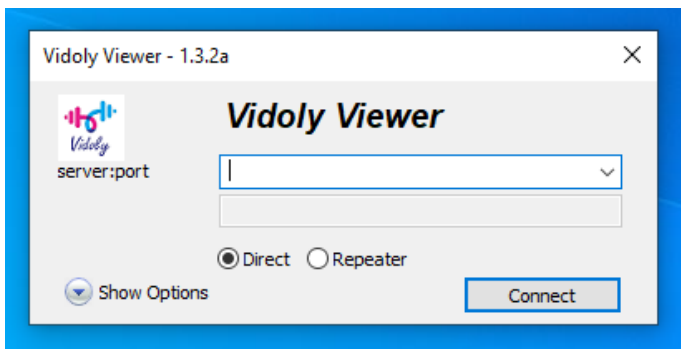


Powerfully built tools like advanced remote access control, system/user manager, remote shutdown, remote file transfer, patch management of remote machines, configuration management of remote machines, report system, managing the inventory/assets, monitoring the network and more enables elite remote support experience and considerably reduces troubleshooting time from days to minutes.



**7. tbVidolyRD (Remote Desktop)**

It is a powerful, easy to use, remote pc access softwares - that can display the screen of another computer (via internet or network) on your own screen. This allows you to use your mouse and keyboard to control the other PC remotely. It means that you can work on a remote computer, as if you were sitting in front of it, right from your current location.

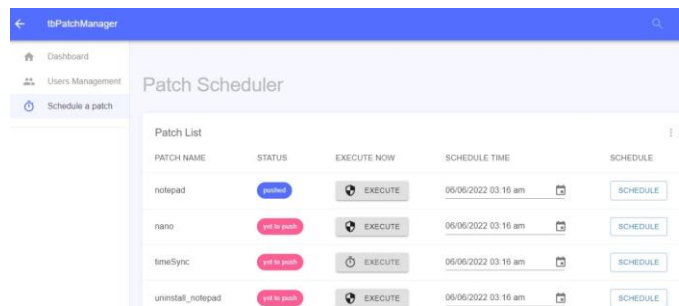


**8. tbRMS (Remote Management System)**

tbRMS is specifically designed to provide fast, easy and secure remote access for central management that need to access critical internal systems. With this solution, organizations can secure access to critical business data and infrastructure, support a distributed workforce.

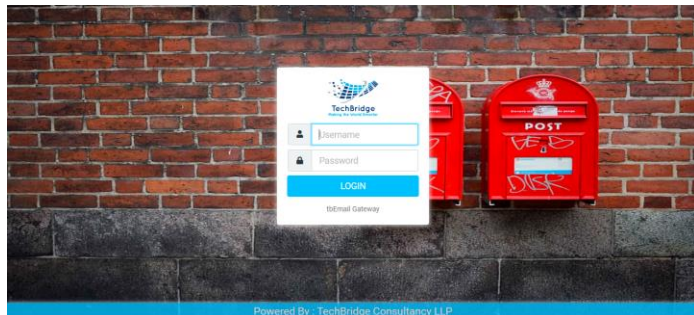
**10. tbPatchManager (Patch Management)**

It controls the deployment of updates to operating system and 3rd party applications. These patches are often necessary to correct errors (also referred to as “vulnerabilities” or “bugs”) in the software. It supports various operating systems, applications etc.



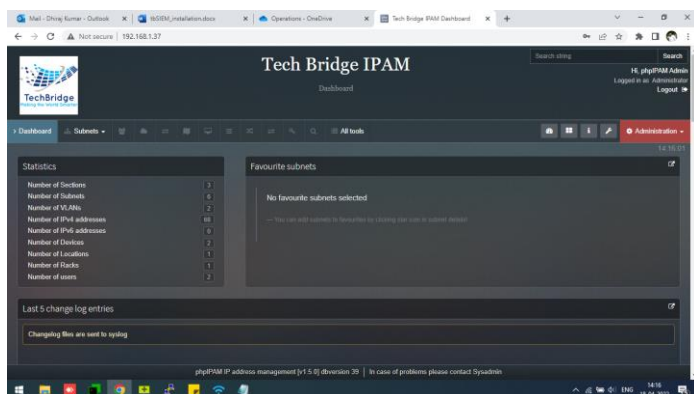
**11. tbEmailGateway**

The tbEmailGateway server is used to securely send, process, and deliver email between clients and servers, server servers and client clients.



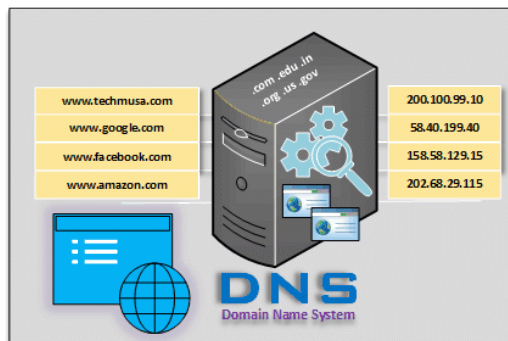
**12. tbIPAM (IP Access Management)**

It refers to a method of IP scanning, IP address tracking and managing the information associated with a network's Internet Protocol address space and tbIPAM system. It simplifies and automates the administration of many tasks involved in IP space management, including writing DNS records and configuring DHCP settings.



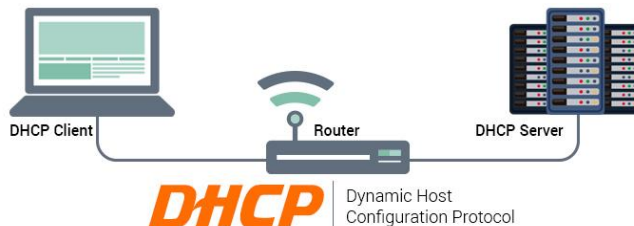
**13. tbDNS (Domain Name Server)**

tbDNS control the domain names accessibility over the internet.



**14. tbDHCP (Dynamic Host Configuration Protocol)**

tbDHCP automate the process of configuring devices on IP networks, thus allowing them to use network services such as DNS, NTP, and any communication protocol based on UDP or TCP.



## FOR MORE INFORMATION

### About TechBridge

TechBridge is the World's leading Product & Solutions Company. Data Center Applications, Collaboration and Real Time Communication. DC Management and Monitoring, Disaster Management, Security, Collaboration and Cloud. Its market-leading Network Modernization, Unified Communications, Mobility and Embedded Communications solutions enable customers to quickly capitalize on growing market segments and introduce differentiating products, applications and services. We are an expert and leader in Government Solutions, Smart City Solutions, Data Centers and Large Enterprises. We do custom applications also, as per the customer requirements.

### Certificates:-

ISO 9001



ISO 27001



ISO 20000



CMMi L3



ISO 15408-1



PinkVERIFY



Mail us at: [sales@tech-bridge.biz](mailto:sales@tech-bridge.biz)

Address:- TechBridge Consultancy Services LLP  
326, Tower B3, Spaze iTech Park, Sector-49, Sohna Road, Gurgaon-122018, Haryana